



## IX2 AIR

# Wireless Thermal Camera for Smart devices

Equipped with a high-sensitivity 256×192 resolution infrared detector, the IX2 AIR can be freely combined or separated with a smartphone according to the scenarios. It supports wireless image transmission and operation. With the supporting App for functions such as real-time analysis and transmission, the device can be widely used in electrical maintenance, equipment inspection, HVAC leak detection, and other fields.



### Product Highlights

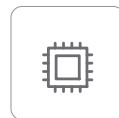
#### Wireless Measurement, Unlocking New Scenarios

- Image transmission delay < 300ms.
- With 2 hours of battery life, productivity is always alive.
- The fuselage comes with a back clip and standard threaded holes, which can be matched with various accessories to facilitate users to observe targets at different angles.



#### Clear Thermal Images, Precise Temperature Measurement

- Built-in 12μm 256×192 infrared detector, featuring low power consumption and small size.
- 40mK professional-grade high thermal sensitivity, capturing smaller temperature differences; wider temperature measurement range of up to 550°C.
- Four image modes + 7 palettes, suitable for temperature observation of different targets and different scenes.

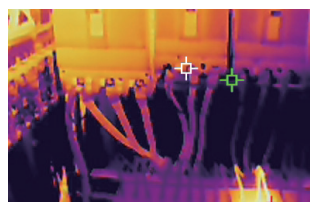


#### Hard-core Configuration, Easy to Use and Convenient

- IP54 waterproof and dustproof, 2m drop protection, light and slim design that fits your hand.
- Faster Wi-Fi connection with the assistance of Bluetooth; OTA upgrade can be easily completed through the mobile app.
- Professional app that supports full-scenario applications such as real-time analysis and offline analysis of temperature measurement images.



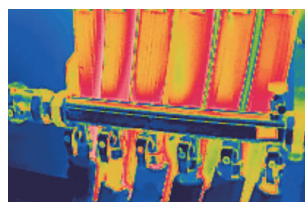
Specifications		IX2 AIR SE	IX2 AIR
Thermal Imaging			
Detector Type	12μm uncooled infrared detector		
Infrared Resolution	256×192		
Spectral Band	7.5~14μm		
NETD	<40mK (25°C,F1.0)		
Frame Rate	25Hz		
Lens Focal Length	3.2mm		
FOV	56°×42°		
IFOV	3.75mrad		
Focus Mode	Fixed focus		
Minimum Imaging Distance	0.3m		
Measurement Range	-20°C~+150°C, +100°C~400°C	-20°C~+150°C, +100°C~550°C	
Measurement Accuracy	±2°C or ±2% of readings,whichever is greater.		
Image Display			
Visible Light Camera	/	2 MP	
Palettes	7		
Image Mode	Infrared	Infrared, visible, PIP, blending, detail enhancement	
Temperature Width Stretch	Auto		
Measurement and Analysis			
App Analysis Function	Central temperature point/Highest temperature point/Lowest temperature point, 1 preset analysis template (support 3 custom points, 3 custom lines, and 3 custom frames)		
System Functions			
Communication Protocol	Wi-Fi, USB, Bluetooth		
Connection	WiFi,Type-C		
Others			
OTA	Support OTA upgrade		
Battery	1050mAh		
Battery Life	About 2h		
Charging Mode	USB Type-C		
Clamp Width	Minimum 131mm/Maximum 172mm		
Tripod Socket	UNC 1/4-20 interface for tripod		
Operating Temperature	-10°C~+50°C		
Operating Humidity	10%~90% (non-condensing)		
Storage Temperature	-20°C~+60°C		
Ingress Protection Rating	IP54		
Shock and Vibration	2G(IEC60068-2-6)、25G(IEC60068-2-29)		
Weight	130g	132g	
Authentication	CE/RoHS/DGM/WEEE/ Measure		
Packing List	Data cable×1,complete machine×1, quick start guide×1, packing list×1, quality certificate×1		
Applications			



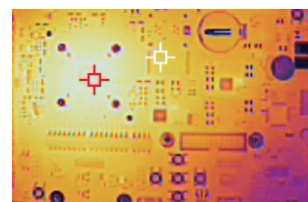
Power Maintenance



Equipment Inspection



HVAC Leak Detection



Circuit Board Repairing